

SUMERGED CONES & DOSING TUBES

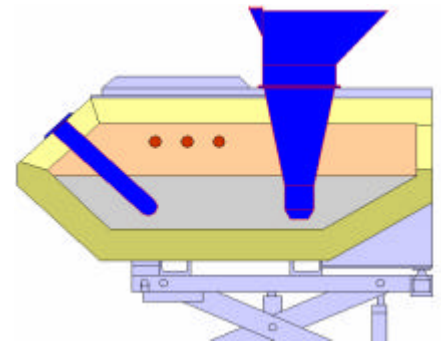
insertec
Furnaces & Refractories

Sumerged Cones & dosing

Submerged cones and dosing tubes are partially under molten aluminium. This exposure causes high thermal shocks in them.

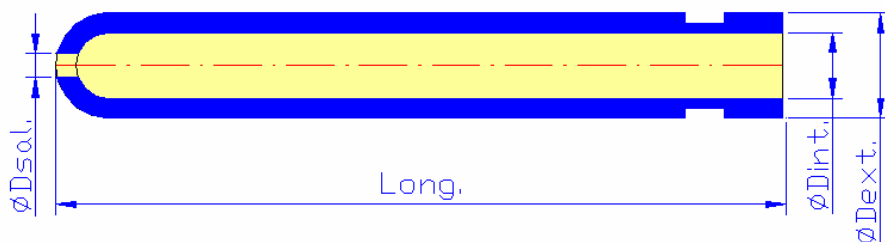
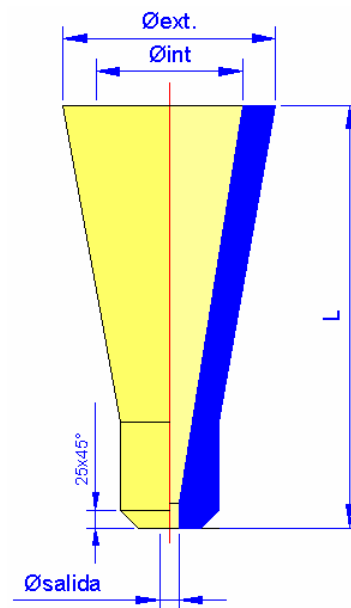
Dosing tubes and submerged cones made in preshaped metallic-ceramic material resist perfectly these conditions and they do not show any structurally weak point.

These pieces made in preshaped metallic-ceramic material can substitute any other kind of material with better performance.



- These pieces support easily strong cleaning conditions because of their strong mechanical resistance.
- They have high thermal shock strength and they have good performance during operations such as heating, molten aluminium pouring.
- They are not wetted by aluminium
- They do not require any maintenance procedure
- Long life of the piece

Model	L	Ø ext.	Ø int.	Ø salida.
CS-520	500 mm	265 mm	175	20 mm
CS-623	600 mm	300 mm	207	23 mm
CS-627	600 mm	300 mm	207	27 mm
CS-635	600 mm	300 mm	207	35 mm
CS-640	600 mm	300 mm	207	40 mm
CS-650	600 mm	300 mm	207	50 mm
CS-730	700 mm	300 mm	207	30 mm
CS-7335	730 mm	300 mm	207	35 mm
CS-7440	740 mm	300 mm	207	40 mm
CS-830	800 mm	300 mm	207	30 mm



Model	Ø Dext	Ø Dint.	Ø Dsal.	Long.
J0-16	65 mm	40 mm	116	570
J1-20	80 mm	50 mm	20 mm	570
J2-21	110 mm	80 mm	21 mm	570
J2-24	110 mm	80 mm	24 mm	570
J2-28	110 mm	80 mm	28 mm	570
J2-35	110 mm	80 mm	35 mm	570
J3-28	130 mm	100	28 mm	570
J3-35	130 mm	100	35 mm	570
J4-35	110 mm	80 mm	35 mm	770

